



**LEWES
PUBLIC
LIBRARY**

2011-2031

**What growth can we
expect over the next 20
years?**

History

Legend has it that the Lewes Public Library was established in the 1630s, but the LPL in its present form began in 1934, and has moved many times, steadily increasing its size. It settled into its current building in 1988. The two wings were the latest addition in 2000.

Reasons for Growth

1. Increase in population of service area

We don't have 2010 Census data yet, but we're expecting our service area to increase by 33% in the next 10 years. (DDL Estimate)

2. Increased demand on services

New studies show that because of population growth, visits to the Library, for whatever reason, will increase.

3. Added services not previously offered

Our own surveys have shown interest in computer classes, teen programs, tutor rooms, more adult classes, more story-times, to name a few.

Can't the present location handle the increased demand?

Delaware Division of Libraries recommends 10,000 square feet per 10,000 of population. Projected population growth over the next 20 years will have the present library at less than half the size needed to handle its service area. Even currently the library, at 13,000 square feet, is less than recommended and needed to handle the current service area population of 18,000.

Won't future needs require less space with devices such as Kindle reducing demand for physical books?

The library is not *just* about books; technology will increase the usage of library services. LPL provides internet access through its public computers. Already used at a maximum, the need for this service will only increase. Other programs include

- Reading programs for young children
- Cultural programs, such as writers' workshops
- Educational programs
- Discussion groups
- Community meetings

The Library doesn't look that busy when I use it.

Of course the Library is not full of people every minute of every day it is open. However, the records show by traffic count that the number of people using the library is increasing faster than the population. Library attendance has increased 81% in the past 10 years, while population has grown by a third. This is true for all months of the year, with the greatest increase over the summer.

Why expand now?

The State of Delaware is currently providing funding on a fifty-percent match for new construction or expansion, and for land acquisition. Given state budgets, we cannot expect this program to continue indefinitely. The program in fact was instituted to bring Delaware libraries, from being ranked one of the lowest in the nation, up to the top quartile.

Secondly, the economy is such now that building costs are relatively low.

Why not expand at the existing site?

That may happen. The Library will appoint a committee of residents from the service area to evaluate expanding at the existing site, as well as building a new facility at different, viable sites.

What will this committee consider in its review of options?

The following is the State's criteria to be considered in site evaluation:

- Site capacity, now and in the future.
- Cost to develop the site.
- Suitability of the soil, topography and solar orientation.
- Parking potential.
- Accessibility.
- Visibility by Passers-by.
- Building “fit” into fabric of the community.
- Legal matters.
- Land cost.

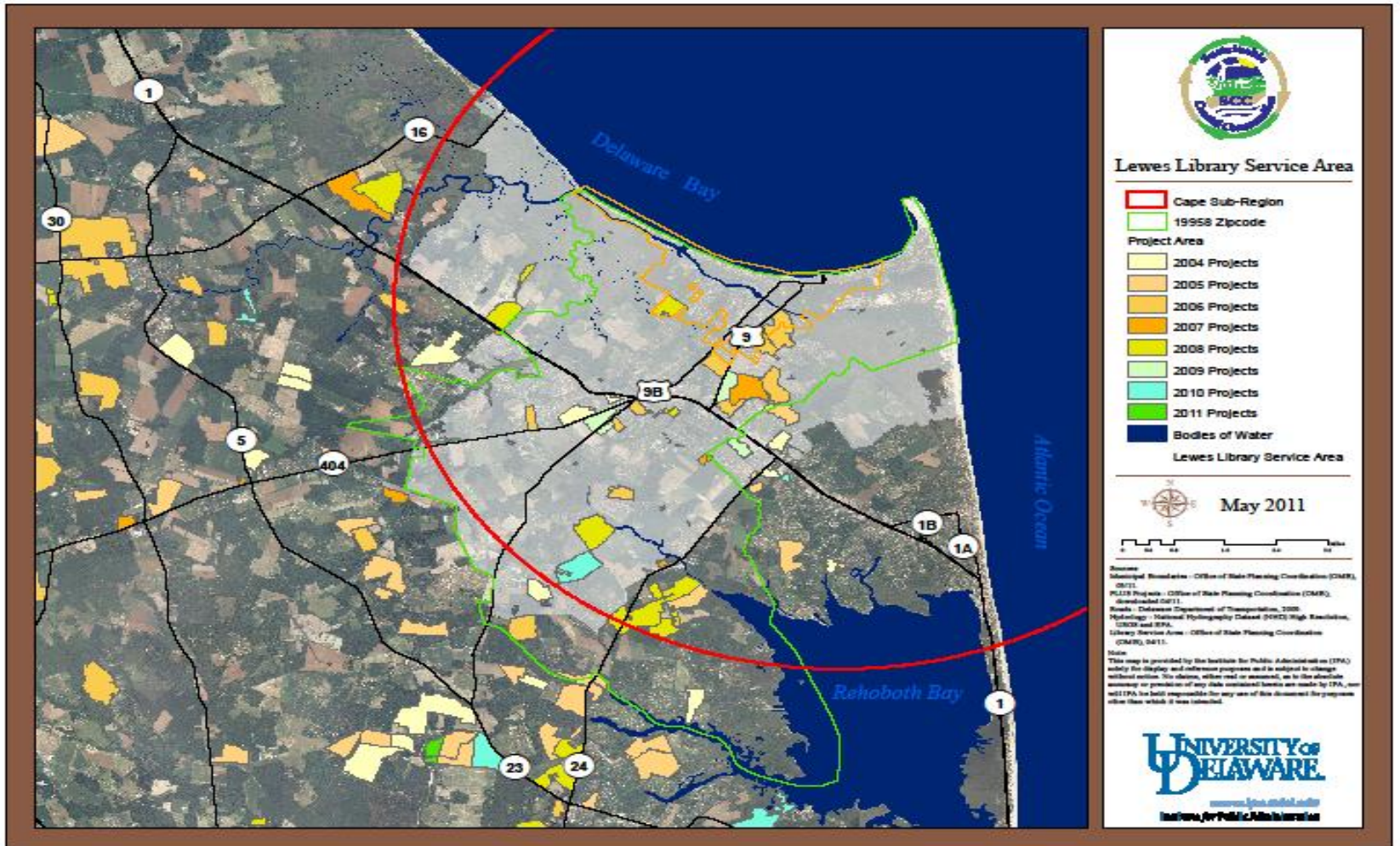
Disruption of service during construction or expansion is also a serious consideration.

There were rumors that the Library Board has already made the decision to move the Library outside the city limits of Lewes and to construct a new building.

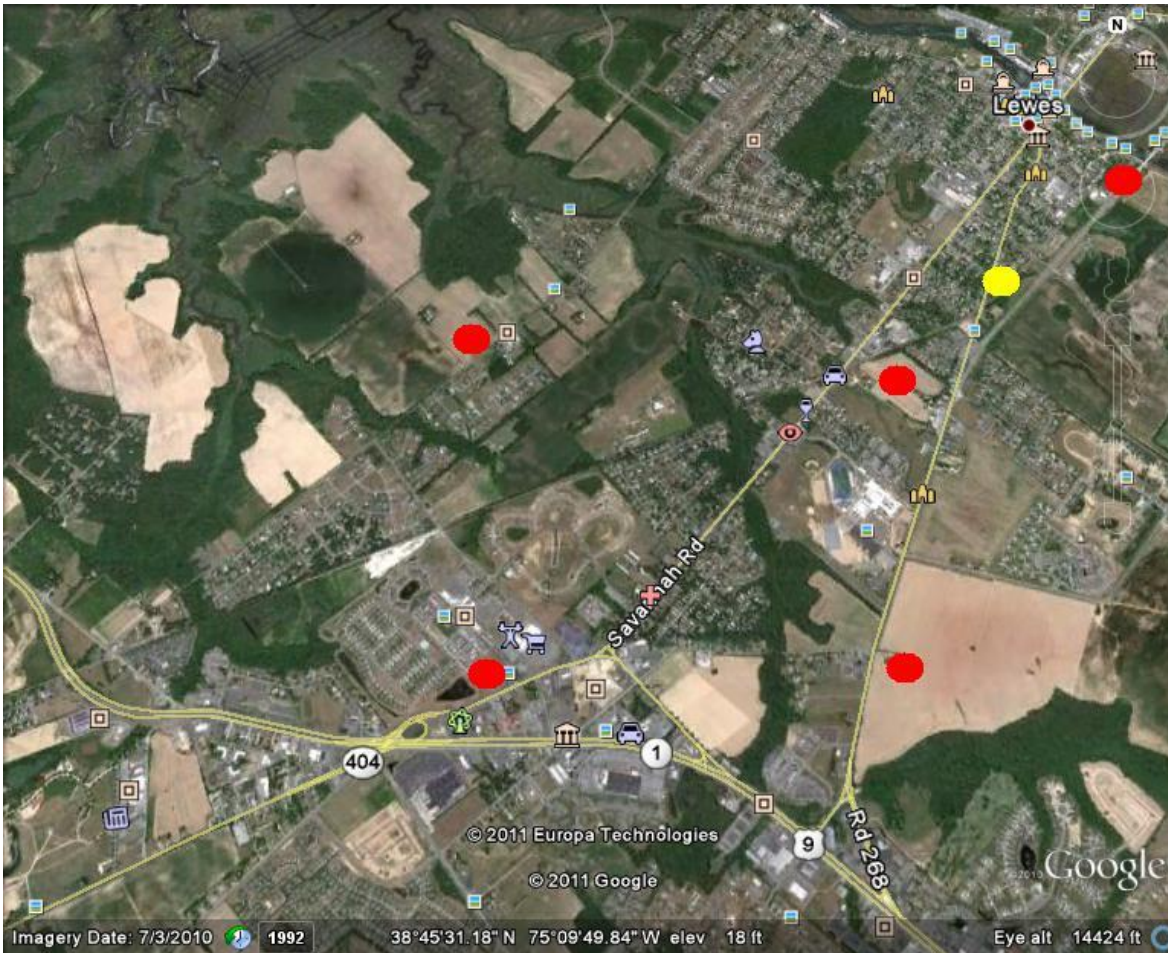
In the fall of 2010, the Board did vote to expand the Library at a different location after being advised by the Parks and Recreation Committee of Lewes that it was recommending to City Council that further encroachment into Stango Park be prohibited. Since then, however, the possibility of expanding into the vacant parcel just south of the building (the Thompson property) has come up, and the Board has re-opened dialog of this site as an option.

The Board has made no decision as to location, and will not, until the process is completed. What the Board has decided is that expansion is needed, whether on the current site or at a new location. Either scenario will require a substantial fund-raising effort, even with the State funds.

Service Area



Possible Sites



The library's current location is represented by the yellow dot.

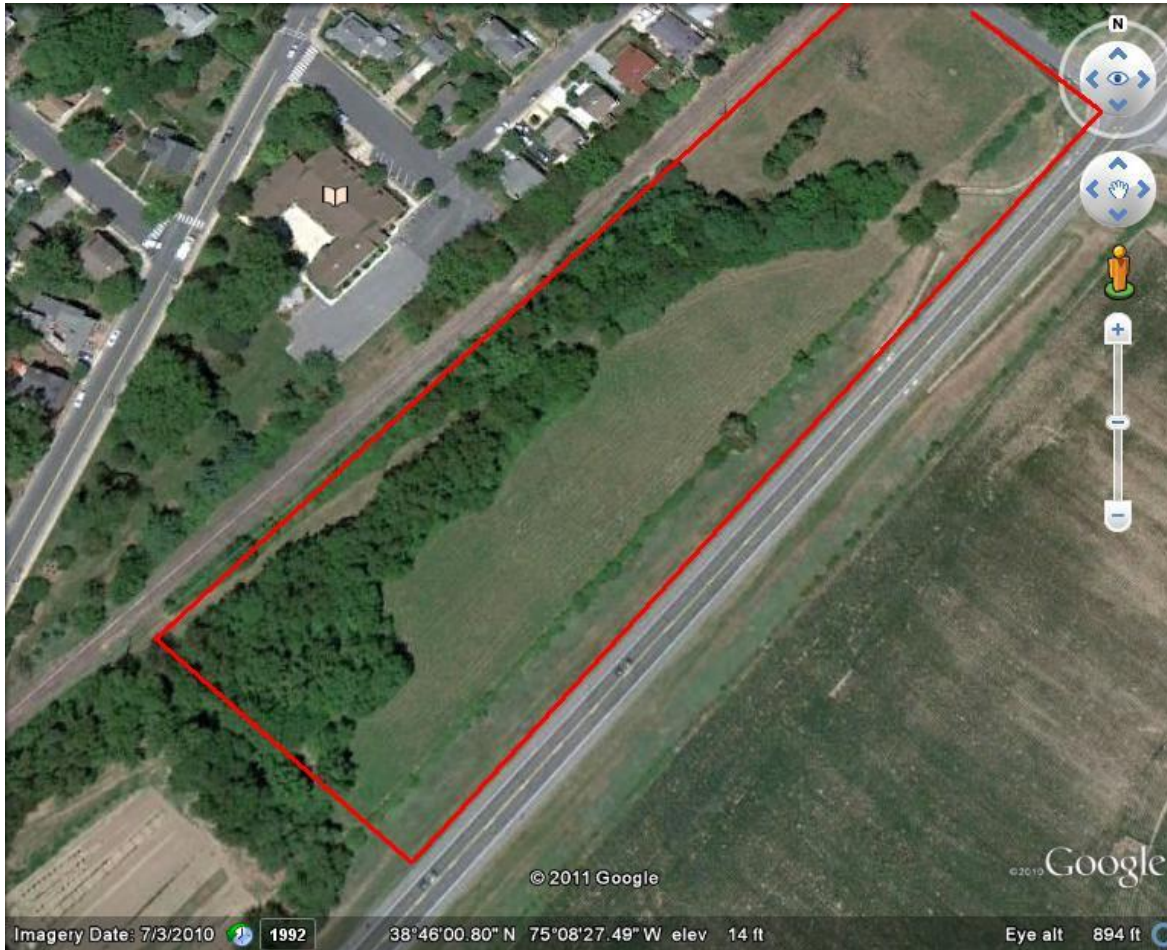
Other possible sites include the Kennedy site to the northeast, the Warrington site (near) and Lingo/Townsend site (far) to the south, the Five Points site to the southwest, and the Groome Church site to the west.

Current Site



The library currently sits within the 1.63 acres of Stango Park, at the intersection of Kings Highway and Adams Ave.

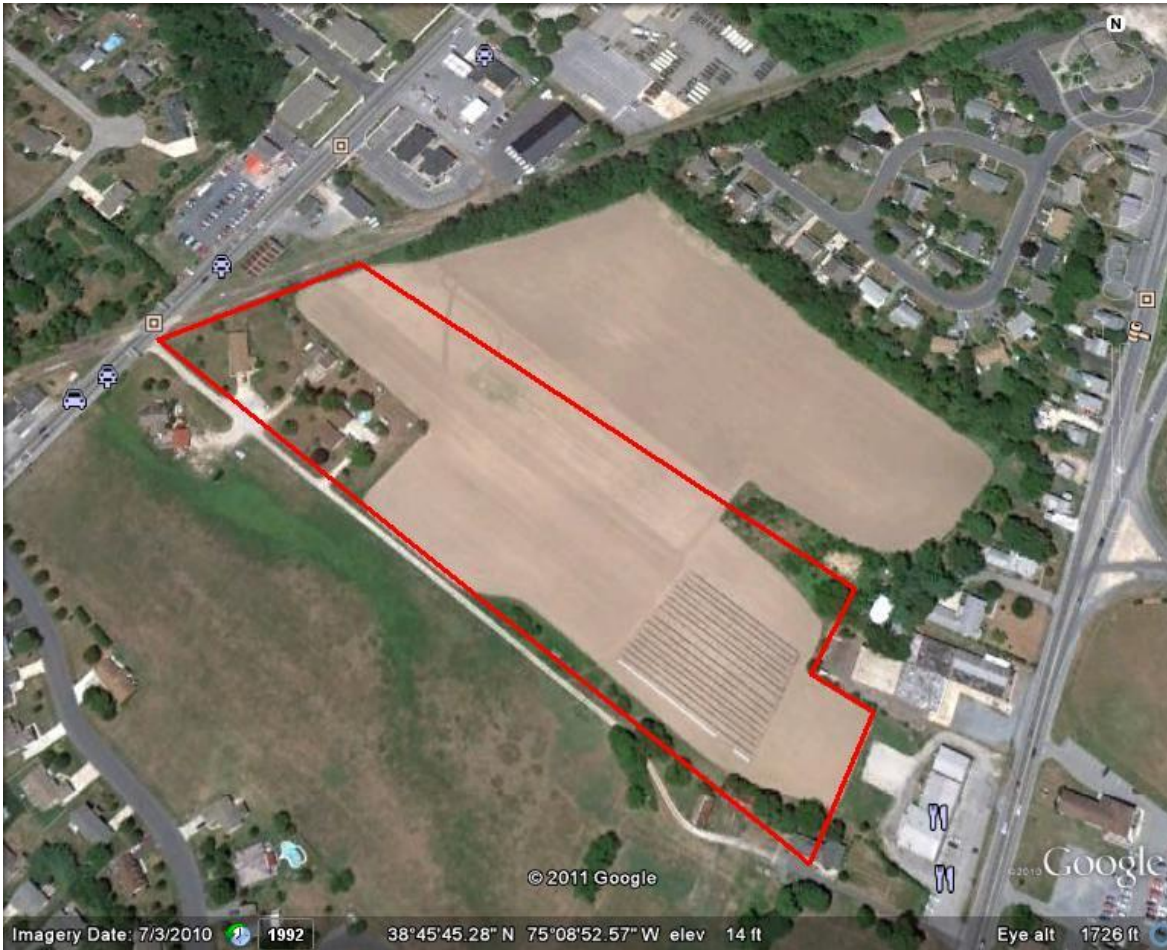
Thompson Property



The 6 acre Thompson property is on Freeman Memorial Highway, directly across the railroad tracks to the southeast of the library.

The library is interested in 2 acres adjacent to the current facility.

Warrington Property



The Warrington Property comprises 14 acres connecting Savannah Road to Kings Highway. The property is accessed by a private road running from near the rail crossing on Savannah to just north of the school bus parking lot on Kings.

The library is interested in the 3 acres in the western corner of the property.

Kennedy Property



The 3.6 acre Kennedy Property sits on Gills Neck Road, 0.25 miles east of downtown Lewes. It is bordered on the west by the railroad, the north by the canal, the east by Freeman Memorial Highway, and the south by the DRBA facility at the end of Franklin Ave.

Groome Church Property



The Groome Church Property sits at the intersection of New Road and Lynn Road.

The library is interested in 3 acres of the parcel.

Five Points Property



The Five Points Property sits at the intersection of Savannah Road and Village Main Boulevard.

The library has been offered a donation of 2.5 acres of the 4 acre parcel.

Lingo/Townsend Property



The Lingo/Townsend property sits on Kings Highway south of Gills Neck Road.

The library has been offered a donation of a 3 acre parcel of the property.